

Centre Cardio-thoracique
10ème étage
11 bis, avenue d'Ostende
Monaco www.ccm.mc

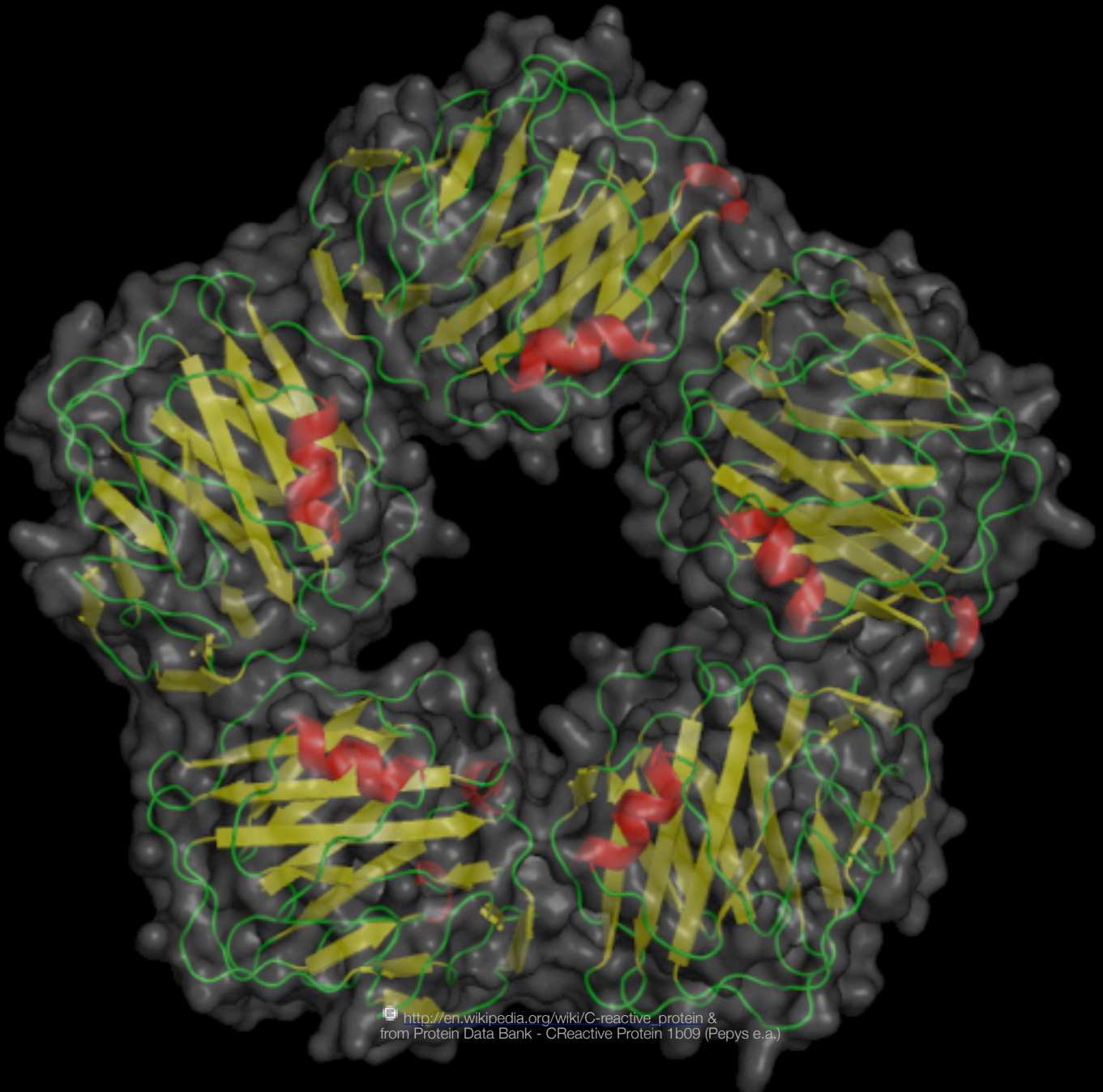


Centre Cardio Thoracique de Monaco

Vendredi 20 avril 2007 - 20h

Séminaire de **Mark Pepys** - University College London

CReactive Protein



http://en.wikipedia.org/wiki/C-reactive_protein &
from Protein Data Bank - CReactive Protein 1b09 (Pepys e.a.)



Vendredi 20 avril 2007 -- 20h

Séminaire en anglais de

Marc Pepys, University College London sur la **CReactive Protein**

organisé par le Centre Cardio-Thoracique de Monaco

10ÈME ÉTAGE
11 BIS, AVENUE D'OSTENDE
MC98004 MONACO CEDEX

TEL: +377 92 16 80 00
FAX: +377 93 25 43 82

WWW.CCM.MC

Mark Pepys is the Professor of Medicine and Head of the Department of Medicine at the Hampstead Campus of **University College London**. He studied medicine at Trinity Col-



lege Cambridge, University College Hospital Medical School and Harvard Medical School, qualifying in 1968, and subsequently took his PhD in immunology at Cambridge in 1973 and became a Fellow of Trinity College, Cambridge. In 1977 he established the Immunological Medicine Unit at the Royal Postgraduate Medical School, Hammersmith Hospital, London developing a world leading centre for study of Creactive protein and related proteins, and of amyloidosis, before he moved with his team to UCL in 1999. At UCL he established and directs the Centre for Amyloidosis and Acute Phase Proteins which includes the UK National Health Service National Amyloidosis Centre.

He is a Fellow of the Royal Society and has recently been a member of its governing Council. He is Founder Fellow of the Academy of Medical

Sciences and has been on its governing Council. He has been the Goulstonian Lecturer (1982), Lumleian Lecturer (1998) and Moxon Medallist (1999) at the Royal College of Physicians of London and will give the Harveian Oration there in 2007. He has also been the Kohn Lecturer at the Royal College of Pathologists (1991), the Sims Professor at the Royal College of Surgeons (1991), the Chandos Lecturer of the Renal Association (2000), and the Heberden Medallist and Orator of the British Society for Rheumatology (2002). He is a Fellow of University College London and a Fellow of the Imperial College Faculty of Medicine.

He has published 115 peer reviewed papers and 33 chapters and reviews on Creactive protein since he started working on it in 1974. This body of work includes much of the basis for routine clinical use of CRP assays as well as the first demonstrations, in collaboration with Attilio Maseri, of the prognostic significance of CRP values in coronary heart disease. In 1984 he produced the World Health Organization International Reference Standard for Immunoassay of Creactive protein, which is the gold standard on which all

clinical CRP assays are based. Pepys and his colleagues solved the 3D Xray crystal structure of CRP (1999), discovered the specific binding of CRP to LDL and VLDL (1984), first demon-



strated the pathogenic role of human CRP after ischaemic tissue damage (1999), and have lately published the largest epidemiological study of CRP and coronary heart disease (2004), as well as critical experimental findings and reviews of the function and clinical significance of CRP in relation to cardiovascular disease. He and collaborators have recently published the rational design and efficacy of the first specific CRP inhibitor drug and are developing it for clinical use.